



BERGTRAGE

ANNUAL REPORT **2020**

Dear Friends and Supporters,

There is likely no single year in Seattle Mountain Rescue's (SMR) 70+ year history that has been as dynamic as 2020 has been for our unit.

We kicked off the year by hosting a Resilience workshop for Mountain Rescue and SAR teams from all across the Pacific Northwest. More than 30 organizations, from Alaska to California and Wyoming, sent members to participate in an industry leading seminar focused on educating wilderness responders on the impact of operational stress injuries on Responders, psychological first aid, and team collaboration around best practices in this arena.

Unbeknownst to SMR, much of this work would ultimately be critical throughout the rest of the year as the novel coronavirus began to spread globally. Within just a few weeks of our workshop, King County was at the forefront of national news with the first confirmed deaths from the virus, occurring in Kirkland. As everyone knows, what followed has had a tremendous impact on how our team conducted training, how we approached missions, and how we ran our unit for the remainder of the year.

To say 2020 was challenging and imposed organizational stress on our unit would be an understatement. But much as we have for over 70 years, our members adapted and overcame these difficulties, deploying on a record 87 missions, rescuing 93 members of our community, and logging more than 3,100 hours of volunteer time. A monumental effort, even when not faced with a global pandemic.

Aside from our trainings and missions, this year also brought some big changes for the unit on the operational side. Not only did we replace one of our aging vehicles with a purpose-built Rescue Truck, but we also were able to secure the purchase of a parcel of land and a small facility in North Bend that our team will work to renovate. This location is within minutes from many of our local peaks along I-90, and will serve as the home of SMR for many years to come.

Administratively, the unit has also welcomed our first woman to lead the unit as the Chairperson in 2021 and 2022. Just as Debbie Riehl in the 1970s became the first woman field

Responder for SMR as she put on her pack and headed into the field to help on a mission, Cheri Higman now has picked up the SMR Chair rucksack and is set to lead us in our next chapter. Cheri has helped serve as our team Vice Chair over the past three years and she will undoubtedly take our unit into an even more successful future.

In closing, I want to say thank you to everyone who has given so much to SMR over the years. The common thread for our team has always been a tightly woven combination of our volunteers and supporters. So with the help of Claire Giordano, a local artist, we also unveiled a new Seattle Mountain Rescue Supporter logo to help honor those who make SMR possible. We hope that this emblem will find its way onto hats, shirts, and even roof rack boxes on cars across our local area so that we can all continue to feel the connection of supporting our local community.

Even with such a difficult year, our team continues to remain ready to respond, to bring people home to their friends, family, and loved ones. Thank you for supporting us and for letting us support you.

Nick Constantine

Nick Constantine
Chairperson



JANUARY 1 2020 - DECEMBER 31 2020

SMR Hours	3,171
SMR Missions	87
SMR Responders	379
Subjects	93
Field Members	67

MISSION

Incorporated in 1948, Seattle Mountain Rescue is a volunteer organization of seasoned alpinists dedicated to saving lives through search, rescue, and mountain safety education. It specializes in mountainous terrain searches and high angle rescues, primarily in King County, Washington. It is a fully-accredited member of the Mountain Rescue Association and the King County Search and Rescue Association.

OUR TEAM

OFFICERS

Nick Constantine,
Chairperson
Cheri Higman,
Vice Chairperson
Doug Hutton,
Treasurer
Doug McCall,
Secretary

Leigh Ann Wolfe,
Fundraising Chair

Casey Marks,
Rescue Chair

Wes Cooper,
Training Chair

Doug Caley,
Equipment Chair

David Dunphy,
Education Chair

BOARD MEMBERS

Doug Caley
Leigh Ann Wolfe
Doug McCall
Garth Bruce
Anna Condino
Gordy Smith
Svenja Fleischer
Jarek Brass
Cheri Higman

Peter Tran,
Pro Deal Coordinator

Garth Bruce,
Technology Chair

Emily Prewett,
Investment
Committee Chair

FIELD MEMBERS

Stephen Allen
John Angulo
Russell Anschell
Vladka Behrova
Brent Bishop
Paul Bongaarts

STRATEGIC PRIORITIES

Excellence: Leading in operations, technical climbing, rigging, avalanche, and wilderness medical services in King County and Washington State.

Team: Building team culture and pathways for development through training, internal education, mentorship, and leadership development.

Community: Providing educational opportunities to enable a culture of mountain safety within our community.

Cross Unit Culture: SMR is an accredited mountain rescue team providing leadership in our community.

Jarek Bras
Patrick Brewer
Benjamin Brown
Garth Bruce
Taylor Brugh
Doug Caley
Jared Carlson
Anna Condino
Nick Constantine
Wes Cooper
Petra Damm
Doug Daniell
Ryan Davis
Sara DeRosier
David Dunphy
Patrick Erley
Svenja Fleischer
Drew Fletcher
Jim Gellman
Kaeli Gockel
Nathan Greenland
Tim Halder
Karl Hangartner
Allison Harmon
Cheri Higman

Eve Jakubowski
Nik Jensen
Petro Ksondzyk
Alexis Leader
Gretchen Lentz
Fred Luck
Andrei Maksimenka
David Maltz
Casey Marks
Doug McCall
Jason Meng
Victor Mesny
Matt Meyers
Brad Near
Derek Newbern
Jason Oppler
Matthew Palubinskas
Lawrence Panzarella
Doug Pierson
Jim Pitts
Barton Place
Emily Prewett
Greg Prothman
Imran Rahman
Robert Ricker

Rick Samona
Gordon Smith
Sarah Stephan
Ben Stone
Ben Stoner-Duncan
Jake Swan
Jakub Szymaszek
Karl Themer
Peter Tran
Gabriel Webster
Leigh Ann Wolfe

SUPPORT MEMBERS

Katjarina Hurt
Raquel Lackey
Bungee
Pickles
Linda Thompson
Brock Gaverty
Al Errington
Warren Thompson

2020 INCIDENT REPORTS

Climbers Stranded on Mount Thompson

Sometimes climbers find themselves in places and situations that requires help to them get home. This was the case In July when at 3:29 a.m. SMR was alerted to three stuck climbers on Mount Thomson. Initial details were relayed from the subjects to a friend in town who then contacted the Sheriff's Department. The climbers had been descending Mount Thompson on a double line rappel when the line became stuck and they could not retrieve it to continue down. They decided to remain in place on a small rock outcropping on a steep face where they were stable, cold, and stuck.

A two-person SMR hasty headed out with climbing gear, first aid kits, and warming gear while a full response began to be organized for first light. This mission underlines the importance of investing in communication tools as hasty teams had to use personal inReach devices for communication when radios stopped working as they pushed deeper into the Alpine Lakes Wilderness.

More SMR teams were deployed at first light with additional ropes and rigging gear to help package and move the cold subjects if they were unable to walk out. Cloud cover and light rain prevented helicopter support. In addition to the technical teams, King County Explorer Search and Rescue



Rescuers moving to the base of the climb on Mount Thompson.

(ESAR) sent in teams to establish radio relays, stage additional gear, and set up a rewarming area on the PCT near Ridge Lake.

Team 1 was within voice contact with the subjects at 11:15 a.m., set up a rope, rappelled down to them, and assisted them in safely ascending the rope back up to the ridge. Team 1 began making their way back down with the three climbers, meeting additional SMR teams in the basin between Bumblebee Pass and Mt. Thompson. The other teams had established hand lines to assist the subjects ascent from the basin to Bumblebee Pass. At Bumblebee, more SMR Teams had set up hand lines for the descent back to the PCT. Once on the trail, SMR provided assistance to the subjects for a difficult snow crossing. The teams met up with the other SAR teams at Ridge Lake where food and hot drinks were enjoyed as the subjects prepared for the long walk home

The high snow year, inadequate equipment, and poor weather conditions were all factors that resulted in this mission. SMR continues to invest in communication tools, lighter rigging equipment and rapid deployment kits so that we can respond to injured and stranded climbers throughout the Cascades at any time of year.

Fallen Hikers on Rachel Lake Cliffs

SMR prides itself not just on its ability to respond in dynamic snow and mountainous terrain, but also for bringing world class medicine to these places when needed. In recent years, we have brought-on several medical professionals who volunteer their time and work closely with King County to provide medical doctor on-call support to missions. These tools were employed at Rachel Lake in the summer of 2020.

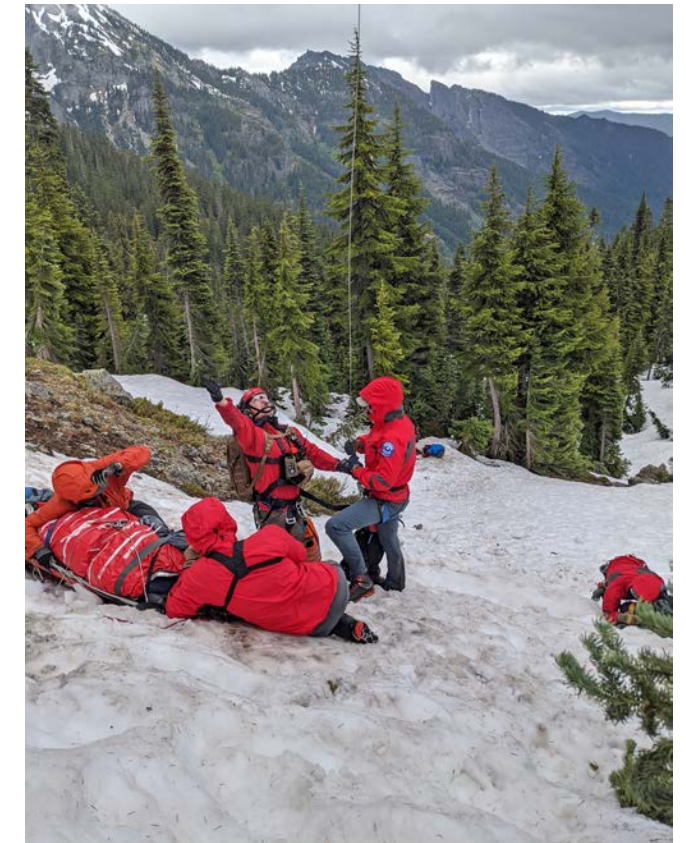
At approximately 9:30 a.m., two teenage hikers were traversing above Rachel Lake when one slipped and fell, sliding down and tumbling off a 40 foot cliff. The second hiker, attempting to descend to his partner, also slipped and fell. Nearby, backpackers heard them fall, investigated, and determined that both needed advanced medical assistance as one subject was going in and out of consciousness. Using a tent and emergency blankets, they constructed a warming shelter and tried to contact 911. Spotty cell phone coverage meant they had to relay information and their location to dispatch over multiple phone calls. One of the responding backpackers descended the trail to seek help as well.

Kittitas County and 911 Dispatch requested helicopter air support from King County Guardian, but the weather wouldn't allow for an extraction. SMR ground teams were requested by Kittitas, arrived at base at approximately 1:30 p.m. and began assessing equipment needs and formulating a plan. Kittitas had previously sent in three teams, including a hasty team with an EMT and a nurse, along with a team carrying medical equipment and two wheeled litters.

SMR teams deployed carrying additional medical equipment, a full body vacuum mattress, oxygen, rigging equipment, and an additional litter. On the hike out, SMR teams supported Kittitas teams during two stream crossings.

A second helicopter recovery was attempted at 3:30 p.m. by NAS Whidbey Island SAR, and despite coming within two miles of the subjects, they had to turn around due to precipitation and cloud cover.

The SMR and Kittitas teams worked to build platforms in the snow in order to reposition the subjects into the litter and the full-body vacuum mattress. SMR member Dr. Ben arrived on scene and coordinated with the Kittitas nurse and EMT, SMR EMT, and SMR wilderness first responders to provide medical care for the two critical subjects. Team members constructed a hasty lowering station in the snow slope using a small tree



Rescue team members prepare for helicopter extraction with the injured subjects.

and two snow pickets for anchoring. They also began to make arrangements if the third helicopter extraction attempt failed.

With clouds starting to lift and some blue sky visible, NAS Whidbey SAR was refueled and ready to make a third attempt to reach the subjects. Teams worked quickly to complete subject packaging and secure the area of loose equipment so that the helicopter could attempt an extraction during the weather window.

During this time, another SMR team arrived at the trailhead and worked with a Kittitas County medic unit to coordinate medications, IV equipment, and rewarming equipment to support the subjects if the help extraction was unsuccessful.

At 6:00 p.m., NAS Whidbey arrived and lowered two medics. Teams assisted the Navy medics in preparing both subjects to be raised into the helicopter. Dr. Ben was also hoisted into the helicopter so that he could continue to supervise medical care during the flight to Harborview. The helicopter pickup was complete at 6:20 p.m. and teams were back in base by 9:00 p.m.

This mission illustrates the need to continue to work towards an SMR Advanced Life Support program, the importance of training and working with other counties, and the importance of contingency planning.

Missing for Nine Days Near Highway 2

SMR uses a variety of tools, techniques, and tactics to safely bring members of our community home when they are lost and reported missing. We continue to adapt and refine our techniques and tools as technology advances and research drives a better understanding of human behavior in the backcountry. In 2020, we instituted our Unmanned Aerial System (UAS) drone program, acquired equipment and developed a team of experts to use these tools. During an eight day search for a missing teenager, these tools were implemented to locate and bring her home to her family.

On July 30 at 6:30 p.m., a page was issued to rescue teams in King County to aid in the search for a lost teenager on Highway 2. For nine days, teams searched relentlessly for the missing person. Searchers climbed drainages, tackling swaths of devils club and slide alder, and used drones to fly search patterns in order to help narrow down search area.

On the seventh day of the search, several SMR members responded at the Skykomish Ranger Station. The team caravanned with King County Search and Rescue Deputies to new search areas of interest that was identified from cell phone forensics. The team bushwhacked to several new points of interest and flew the drone in each areas in order to get a better read on the terrain and to look for clues.

Earlier clues including personal effects and notes written by the teenager suggested that she had spent time near the creek.

On day eight, using cell phone forensics, evidence from the previous search days, and information captured from the drone, search areas were refined. Five Mountain Rescue teams including two teams made of up SMR members, went into the field and focused on areas that had high likelihood of finding the subject.

Several clues found that day indicated teams were working in more relevant search areas. Teams lead by SMR searched both sides of a creek, checking the water for clues. Earlier



The subject reunited with her family.

clues including personal effects and notes written by the teenager suggested that she had spent time near the creek. After downstream searches revealed no sign of the subject, teams were redirected to focus their search up-creek.

As teams moved up the creek they continued to find evidence of the missing girl. Canine teams were used to track her scent and by mid-afternoon an SMR team found the subject alive and doing fairly well.

SMR members, including a doctor and an EMT, provided basic life support and assessed her condition. She was given food, water and warm clothing, and moved into a safer location. The teenager was able to walk out on her own with support from Responders. The teams offered her trekking poles to walk on the uneven terrain and set up a fixed line for her to use on more difficult terrain. Returning to command, SMR reunited the subject with her parents and delivered her to an awaiting EMT.

This mission not only highlights the use of technology to identify and refine search areas, but it also highlights the amazing community that SMR is a part of. Combining efforts with other mountain rescue teams, canine teams, and out-of-county search teams helped make this mission a success.

Canine Rescue on Chikamin

“Climbers Helping Critters” could be our new slogan. This is because each year, SMR assists in the safe return of pets who chase mountain goats off ridges or wander away when off-leash. We train to rescue four-legged subjects, carry dog-specific rescue equipment and also create improvised harnesses using webbing, and many of our members have additional training to work with animals. We use the same rigging systems for dogs as we do with human subjects.

Two brothers were hiking near Chikamin when their 120-pound Akita, “Bear,” fell down a gully after being spooked by a mountain goat.

This mission highlights our ability to provide care for pets, as well as humans, and to operate with flexibility and nimbleness during a rescue.

At 9:52 a.m., King County Sheriff’s Office (KCSO) requested support for a SPOT beacon that had been activated near Chikamin Peak. Two brothers were hiking near Chikamin when their 120-pound Akita, “Bear,” fell down a gully after being spooked by a mountain goat. A SMR hasty team was deployed and ran approximately 11 miles of trail, gaining 3,600 feet of elevation, to access the subjects and assess the situation. In order to travel fast and light, they carried minimal gear including radios, some rigging equipment, and warm clothing. Their speed allowed them to reach the brothers quickly and relay information and equipment requests to command.

Bear had slid just over 300 feet down a gully. There were no natural anchors, like trees or large rocks, in proximity which would provide safe access the gully. The hasty team radioed

for additional rigging equipment, including a bolt gun, in case they were unable to build a natural anchor.

After receiving the hasty teams requests, a second SMR team deployed with two 300-foot ropes and additional rescue equipment. The team of two deployed into the field, each carrying packs weighing more than 55 pounds and covered the 11 miles in just under four hours. With the additional ropes, SMR was able to set up a rigging system, successfully constructing anchors from rocks further away from the gully. An attendant was lowered and reached Bear at 10:53 p.m.. The attendant secured the dog by creating an improvised dog harness made out of webbing and with help from the rigging team, assisted Bear back to the top by approximately 11:34 p.m.



Bear drinking some much needed water after being rescued from a gully.

After taking care of Bear and providing food, water and lots of pets, the teams were back on the trail at midnight. The exhausted canine was having difficulty traveling the distance, so about two miles from the trailhead the brothers decided to spend a few hours resting with him. All the teams were back in base at 5:57 a.m. in time for breakfast and much-needed coffee.

With a small group of people, creative problem solving skills, and the desire to help those in need, SMR is able to provide its technical skill to any part of the county when people—or our furry friends—need our help. Over the next year, we are developing a new lighter weight rigging system that will make it easier for teams to deploy with the proper equipment for all subjects, even four legged ones.

COVID Response



Dr Anna Condino at a rigging training.

The global pandemic caused many changes and challenges for our organization. We saw an increase in use of our public lands as more people sought those resources as a place for mental health, fitness, and a place to social distance. We worked with our medical volunteers and other teams to provide best practices for our field operations, we delayed recruitment, and we moved training online.

- New COVID Field Practices
- Thank you Outdoor Research and North Face for PPE!
- Participated in Washington Recreate Responsibility Coalition messaging
- Created videos and online training for team members
- Collaborations with other SAR teams and county officials

The SMR Resilience Team



Pickles and Bungee ready to assist.

In January 2020, Seattle Mountain Rescue hosted the Pacific Northwest Resilience Workshop, a weekend-long conference attended by first responders representing thirty teams from across seven states to learn best practices on caring for both subjects and responders in stressful situations.

The SMR Resilience Team formed in earnest from members who attended the workshop. Since then, we have invited four new members to help support SMR responders before, during, and after traumatic rescues and events: Katja Hurt of Wilderness Chaplains and Raquel Lackey of HOPE Animal-Assisted Crisis Response—plus Raquel's two dogs trained in crisis response, Bungee and Pickles! We also developed a website with resources to educate both our own membership as well as other search and rescue teams about stress injuries and stress first aid.

The Resilience Team continues to work toward supporting all members of SMR in stressful situations, providing psychological first aid to subjects and bystanders on the scene, and striving to reduce the risk of stress injuries among our membership.

seattlemountainrescue.org/stress-first-aid



Training

Our Field members must maintain their training in wilderness medicine, technical rope rescue, and avalanche safety along with maintaining their personal climbing skills and fitness.

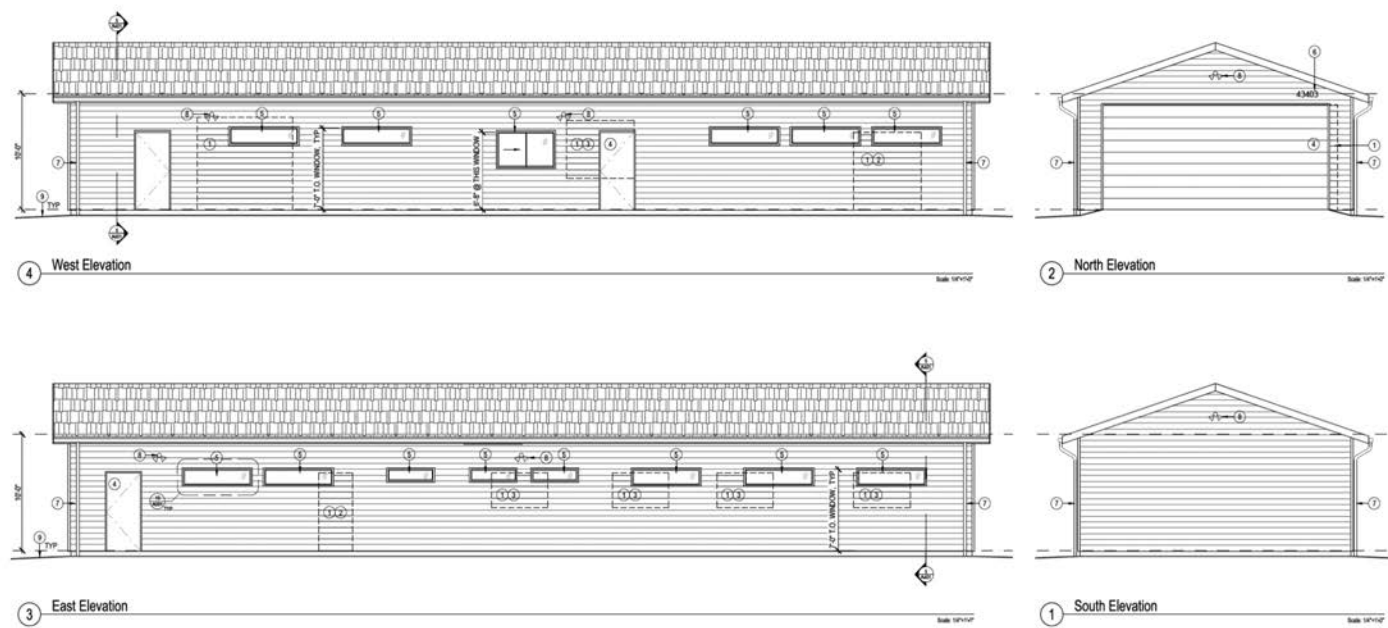
- We offer excellence in wilderness medical care with a team of on-call doctors, quarterly medical training hosted by our medical committee, and opportunities to grow our members' medical practice. SMR supported two members in pursuing their R-EMT this year.
- We practice rigging come rain or shine. The unit engages in two Rigging-for-Rescue weekends in the spring and fall, and we provide monthly rigging training to ensure our team is practiced and rehearsed on all our systems.
- We encourage our members to further their knowledge of avalanche hazards and management. SMR supported three members to pursue their AIARE Level 2 Avalanche Course this year.

Throughout the year we offer team training opportunities and also organize cross-organization events. This year included working with NAS Whidbey SAR helicopter team, King County Explorer Search and Rescue, SPART, Kittitas County, and others. We will continue to find ways to support our members and other teams to hone their rescue skills.



New Rescue Vehicle in Service

Thanks to donations and grants last year we were able to replace our 10 year old rescue truck with "Big Red". In the summer of 2020, we put this new truck into service with new useful features including better storage and drying space, scene lights and ways to charge electronics.



The Mountain Rescue Center (MRC)

NORTH BEND, WASHINGTON

In December 2020 the board moved forward with purchasing a property and building in North Bend Washington to locate Seattle Mountain Rescue in the heart of our response area in the Cascades. For years the team has kept its equipment spread out over several locations and borrowed training space at local fire departments. Over the next year we will collaborate with Washington State, King County, private foundations, and individuals to bring this facility into service to support our field operations. This will include equipment storage, team training space, and education space.



EQUIPMENT STORAGE

A base to dry, wash, care, and maintain our equipment and vehicles.



TEAM TRAINING

A location to train our members on medical care, rigging practices, and avalanche operations.



MOUNTAIN SAFETY EDUCATION

A space to engage our community on practices to reduce risk in a backcountry environment.



TEAM RESILIENCY

A safe home to decompress and take care of rescuer well being.

2020 RESCUE REVIEW

JANUARY

RESCUE: Knee Injury - Poo Poo Point

DATE: 1/25/2020

DURATION: 1 hour, 59 minutes

ATTENDEES: 4 SMR Responders

MARCH

RESCUE: Lost Snowshoe - Mount Rainier

DATE: 3/1/2020 - 3/2/2020

DURATION: 21 Hours

ATTENDEES: 1 SMR Responder

FEBRUARY

RESCUE: Lost Hike - Mud Mountain

DATE: 2/2/2020 - 2/3/2020

DURATION: 1 Day, 7 Hours, 57 minutes

ATTENDEES: 6 SMR Responders

RESCUE: Lost Hikers - Rattlesnake Lake

DATE: 3/13/2020

DURATION: 2 hours, 15 minutes

ATTENDEES: 1 SMR Responder

RESCUE: Lost Skiers - Snoqualmie Pass

DATE: 2/12/2020

DURATION: 2 hours, 17 minutes

ATTENDEES: 2 SMR Responders

RESCUE: Lost Skier - Alpentel to Middle Fork

DATE: 2/14/2020

DURATION: 7 hours, 52 minutes

ATTENDEES: 6 SMR Responders

RESCUE: Lost Hiker - Mailbox Peak

DATE: 2/29/2020

DURATION: 3 hours, 14 minutes

ATTENDEES: 2 SMR Responders



Rescue of an injured back country skier on Kendall Silver Twins.

RESCUE: Injured Skier - Kendall Peak

DATE: 3/14/2020 - 3/15/2020

DURATION: 12 hours

ATTENDEES: 11 SMR Responders

RESCUE: Clifed Out Skier

DATE: 3/15/2020

DURATION: 3 hours, 12 minutes

ATTENDEES: 11 SMR Responders

RESCUE: Foot Injury - Mailbox Peak

DATE: 3/21/2020

DURATION: 6 hours

ATTENDEES: 2 SMR Responders



Members training at our annual Snow Rescue training event in Kittitas, Washington.

APRIL

RESCUE: Clifed Out Hiker - Franklin Ghost Town

DATE: 4/18/2020

DURATION: 3 hours, 9 minutes

ATTENDEES: 2 SMR Responders

MAY

RESCUE: Ankle Injury - Rattlesnake Ledge

DATE: 5/9/2020

DURATION: 4 hours, 36 minutes

ATTENDEES: 1 SMR Responder

RESCUE: Fallen Climber - Little Si

DATE: 5/27/2020

DURATION: 3 hours, 10 minutes

ATTENDEES: 13 SMR Responders

RESCUE: Medical Assist - Mailbox Peak

DATE: 5/27/2020

DURATION: 2 hours

ATTENDEES: 3 SMR Responders

JUNE

RESCUE: Lost Hikers - Bandera Mountain

DATE: 6/17/2020

DURATION: 3hours, 40 minutes

ATTENDEES: 4 SMR Responders

RESCUE: Fallen Hikers - Rachel Lake

DATE: 6/20/2020

DURATION: 10 hours, 30 minutes

ATTENDEES: 19 SMR Responders

RESCUE: Lost Hiker - Mount Rainier

DATE: 6/23/2020 - 6/24/2020

DURATION: 24 hours, 13 minutes

ATTENDEES: 2 SMR Responders



SMR Members evaluating route options to reach a missing climber.

RESCUE: Lost Hiker - Mount Rainier

DATE: 6/23/2020

DURATION: 12 hours, 30 minutes

ATTENDEES: 4 SMR Responders

RESCUE: Clifed Out Hiker - Kanasket Palmer

DATE: 7/3/2020 - 7/4/2020

DURATION: 4 hours, 24 minutes

ATTENDEES: 4 SMR Responders

JULY

RESCUE: Lost Hikers - Mount Rainier

DATE: 7/1/2020

DURATION: 11 hours 45 minutes

ATTENDEES: 2 SMR Responders

RESCUE: Personal Locator Beacon - PCT

DATE: 7/8/2020

DURATION: 4 hours, 16 minutes

ATTENDEES: 7 SMR Responders



Summer training with NAS Whidbey SAR

RESCUE: Injured Hiker - Dirty Harry's Balcony
DATE: 7/10/2020
DURATION: 1 hour, 53 minutes
ATTENDEES: 5 SMR Responders

RESCUE: Hip Injury - Talapus Lake
DATE: 7/12/2020 - 7/13/2020
DURATION: 7 hours
ATTENDEES: 1 SMR Responder

RESCUE: Stranded Climbers - Mount Thomson
DATE: 7/12/ 2020
DURATION: 15 hours, 1 minute
ATTENDEES: 6 SMR Responders

RESCUE: Clifed Out Dog - Beckler
DATE: 7/14/2020
DURATION: 11 hours, 30 minutes
ATTENDEES: 2 SMR Responders

RESCUE: Injured Knee - Snow Lake
DATE: 7/15/2020
DURATION: 4 hours
ATTENDEES: 1 SMR Responder

RESCUE: Head and Shoulder Injury - Snow Lake
DATE: 7/18/2020
DURATION: 4 hours, 10 minutes
ATTENDEES: 2 SMR Responders

RESCUE: Clifed Out Hiker - French Creek
DATE: 7/19/2020 - 7/20/2020
DURATION: 4 hours, 28 minutes
ATTENDEES: 5 SMR Responders

RESCUE: Lost Hiker - Blethen Lake, Operation Period (OP) 1-4
DATE: 7/22/2020 - 7/26/2020
DURATION: 3 days, 23 hours, 20 minutes
ATTENDEES: 8 SMR Responders

RESCUE: Clifed Out Dog - Silver Peak
DATE: 7/25/2020
DURATION: 9 hours, 7 minutes
ATTENDEES: 5 SMR Responders

RESCUE: Medical Assist - Granite Mountain
DATE: 7/30/2020
DURATION: 2 hours, 20 minutes
ATTENDEES: 2 SMR Responders

RESCUE: Lost Hiker - Blethen Lake, OP 5
DATE: 7/31/2020
DURATION: 15 hours, 30 minutes
ATTENDEES: 9 SMR Responders

AUGUST

RESCUE: Lost Hiker - Skykomish, OPs 1-7
DATE: 8/1/2020
DURATION: 6 days, 22 hours, 20 minutes
ATTENDEES: 17 SMR Responders

RESCUE: Lost Hiker - Steven's Pass
DATE: 8/1/2020 - 8/2/2020
DURATION: 18 hours, 30 minutes
ATTENDEES: 2 SMR Responders

RESCUE: Medical Assist - Kelly Butte
DATE: 8/3/2020
DURATION: 5 hours, 5 minutes
ATTENDEES: 3 SMR Responders

RESCUE: Fallen Hiker - Iron Cap
DATE: 8/9/2020
DURATION: 7 hours, 42 minutes
ATTENDEES: 9 SMR Responders



Rescuers assist an overdue 77 year old hiker to safety.

RESCUE: Medical Assist - Mount Si

DATE: 8/10/2020

DURATION: 2 hours, 55 minutes

ATTENDEES: 1 SMR Responder

RESCUE: Recovery - Mount Rainier

DATE: 8/16/2020

DURATION: 10 hours, 30 minutes

ATTENDEES: 2 SMR Responders

RESCUE: Lost Hiker - Snoqualmie Pass

DATE: 8/23/2020

DURATION: 3 hours, 51 minutes

ATTENDEES: 1 SMR Responder

RESCUE: Fallen Dog - Chikamin Peak

DATE: 8/29/2020 - 8/30/2020

DURATION: 20 hours, 5 minutes

ATTENDEES: 6 SMR Responders

SEPTEMBER

RESCUE: Recovery - Big Heart Lake

DATE: 9/4/2020 - 9/5/2020

DURATION: 1 day, 4 hours, 12 minutes

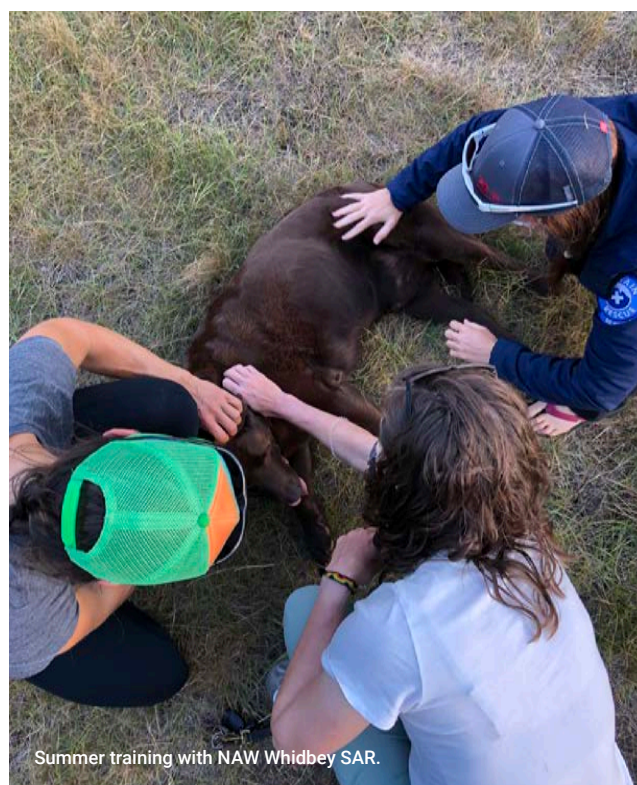
ATTENDEES: 2 SMR Responders

RESCUE: Knee Injury - Mount Si

DATE: 9/5/2020

DURATION: 2 hours, 22 minutes

ATTENDEES: 2 SMR Responders



Summer training with NAW Whidbey SAR.

RESCUE: Ankle Injury - Little Si

DATE: 9/6/2020

DURATION: 3 hours, 33 minutes

ATTENDEES: 4 Responders

RESCUE: Lost Hiker - Gem Lake, OPs 1-6

DATE: 9/29/2020 - 10/2/2020

DURATION: 5 days, 9 hours, 10 minutes

ATTENDEES: 19 SMR Responders

OCTOBER

RESCUE: Ankle Injury - Otter Falls

DATE: 10/1/2020

DURATION: 6 hours, 5 minutes

ATTENDEES: 2 SMR Responders

RESCUE: Lost Hiker - Mount Rainier, OPs 1-8

DATE: 10/12/2020 - 10/20/2020

DURATION: 8 days

ATTENDEES: 22 SMR Responders

RESCUE: Lost Trail Runner - PCT

DATE: 10/12/2020

DURATION: 3 hours, 26 minutes

ATTENDEES: 1 SMR Responder

RESCUE: Lost Hiker - Gem Lake (Ops 7-9)

DATE: 10/17/2020 - 10/31/2020

DURATION: 3 days

ATTENDEES: 43 SMR Responders

NOVEMBER

RESCUE: Lost Snowshoer - Mount Rainier

DATE: 11/7/2020

DURATION: 12 hours

ATTENDEES: 1 SMR Responder

RESCUE: Lost Hiker - Snow Lake

DATE: 11/9/2020 - 11/10/2020

DURATION: 12 hours, 29 minutes

ATTENDEES: 6 SMR Responders

RESCUE: Medical Assist - Snoqualmie Mountain

DATE: 11/11/2020

DURATION: 3 hours, 52 minutes

ATTENDEES: 12 SMR Responders

RESCUE: Lost Hikers - Annette Lake

DATE: 11/13/2020 - 11/14/2020

DURATION: 5 hours, 45 minutes

ATTENDEES: 2 SMR Responders

RESCUE: Lost Hikers - Mailbox Peak

DATE: 11/14/2020

DURATION: 1 hour, 51 minutes

ATTENDEES: 3 SMR Responders

RESCUE: Lost Hikers - Mailbox Peak

DATE: 11/30/2020

DURATION: 5 hours, 22 minutes

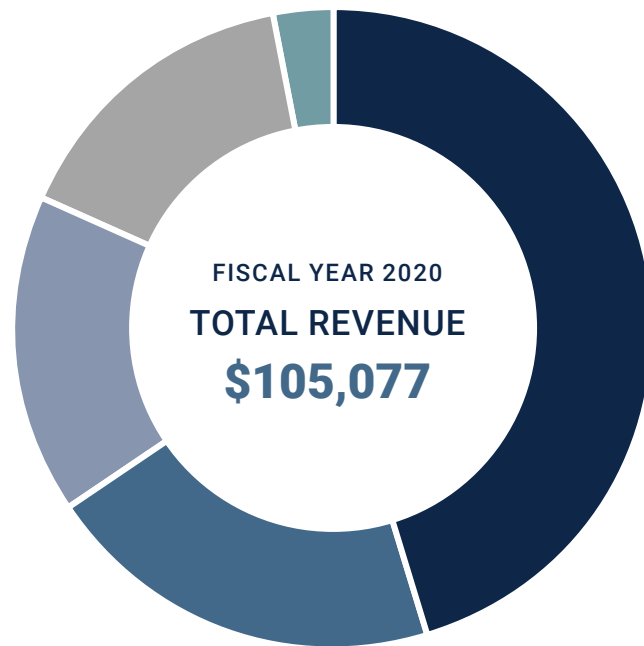
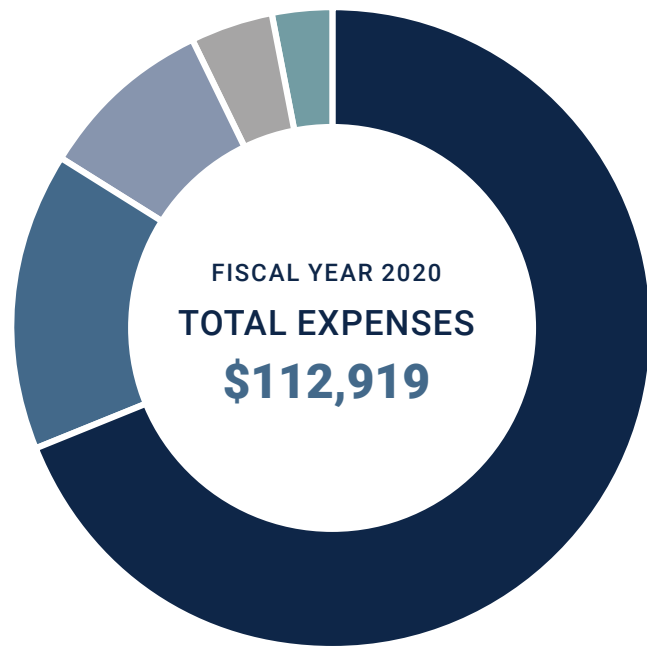
ATTENDEES: 3 SMR Responders



Rescuers at Mount Rainier.

FINANCIALS

THANK YOU TO OUR DONORS



- Rescue Vehicle: \$77,552 - 69%
- Equipment: \$16,945 - 15%
- Training: \$10,510 - 9%
- Administrative: \$ 4,667 - 4%
- Vehicle Maintenance: \$3,245 - 3%

- Corporate Donors & Matching: \$47,617 - 45%
- Fundraisers: \$20,860 - 20%
- Sustaining Donors: \$16,178 - 16%
- General Donors: \$15,828 - 15%
- Other: \$4,594 - 4%

\$2,000+

John P. Privat
Nick Constantine

\$1,000-\$2,000

Evgeny Vasenev
Gayle Hanna
Jakub Szymaszek
Joetta Bell
Michael Mosman
Raquel Lackey
Steve Trafton
Tucker Ziblich

\$500-\$1,000

Christine Nelson
Eric Muller
Imran Rahman
James Lindsey
Jane Hedreen
Karen Becker
Kimberly Haines
Maneesha Lall
Robert S. Mecklenberg
Sherry Gates

\$250-\$500

Alfred Koury Jr.
Dan O'Neill
Erik Hedblom

\$100-\$250

Gavin Ryan
Jasmine Sandhu
Jeffrey Kilpatrick
Joanne Warsinske
Jonathan Scherer
Lawrence Colagiovanni
Mike Daly
Nancy Evans
Patricia Skinner
Roger F. Wilcox
Sara Gonzalez
Shadow Behrends
Steven Beauchamp

\$100-\$250

Alex Bond
Allison Harmon
Andrea Foegler
Anne Wagner
Avivit Schramm
Barb LeRoy
Belia Morales
Ben Marwick
Brad Hefta-Gaub
Bradley Near
Brock Jones
Cheri Higman
Christine Estrada
Christopher Haines
David Roche
David Runde

\$50-\$100

Dawn Anson
Don Goodman
Douglas Smart
Drew Fletcher
Eckart W. Schmidt
Estelle Becker
Eugene Kwan
Garth Bruce
Gene Alan Adair
Geoffrey Martin
Gerald A. Newgard
Harriet Angulo
Helen Jones
James Keithly
Jason Dudek
Jason Oppler
Jean Bennet-Sabel
Jennifer Hein
Jennifer Smith
Jim Baker
Jim Gellman
Joan M. Knowles
John F. Hays
Julian Simon Ph.d
Karen Fossum
Karl Themer
Kathleen Flood
Kristen Turner
Kyle Slyngstad
Leslie Haws
Lilly Irani

Lorraine Blackler
Margaret Richter
Marguerite Marks
Marsha Munson
Megan Snyder
Michael Faoro
Mike Munson
Peter Stevens
Rex Himes
Rich King
Richard Clawson
Rita Ruia
Rod Chelgren
Ronald K. Murrish
Ryan Byington
Sandra Bowman
Sara Havill
Stephen Sieberson
Tamara Mixson
Thea C Layton

\$50-\$100

Alex Brozowski
Andrea E. Duncan
Andreas Angerer
Carly Halverson
Dana Fujimoto
Doug Pierson
Gary S. Glenn
Gowtham Durairaj
Guada Casuso

Heather Clark
Jenna Schwartz
John E. Edison
John Sanders
Kathie Koch
Kathleen Rosenberg
Kelsey Maki
Kenneth Davis
Kristin Sasseen
Laura Gibbons
Lauren Baron
Lidwina Rahman
Maeve O'Donovan
Michael Aliaga
Mike Bunner
Paul A. Robisch
Randolph L. Sperry
Remi Taum-Deenik
Shannyn Fuerst
Stefanie Dirks
Steven Quig
Thaddeus Duhme
Anna Condino
Brent Bishop
Ira Rushwald
Jake Swan
Jason Meng
Michael Zimmerman
Nancy Neuerburg
Nate Smith
Patrick Brewer

*We apologize if we did not include you or if you wish to remain anonymous.
Please email chair@seattlemountainrescue.org with any questions or concerns.





MAILING ADDRESS

Mountain Rescue Center (MRC)
43403 SE 128th PI
North Bend, WA 98045, USA

CONTACT US

info@seattlemountainrescue.org

 [seattlemountainrescue](https://www.facebook.com/seattlemountainrescue)

 [@seattlemountainrescue](https://www.instagram.com/seattlemountainrescue)

